

Y8 Enrichment Homework - Tourism Topic – Summer 1



Your Geography
Enrichment homework task
for this term is to plan trip
to a tourist destination in
the UK.

Enrichment Homework
Due: 22nd May

Option 1:

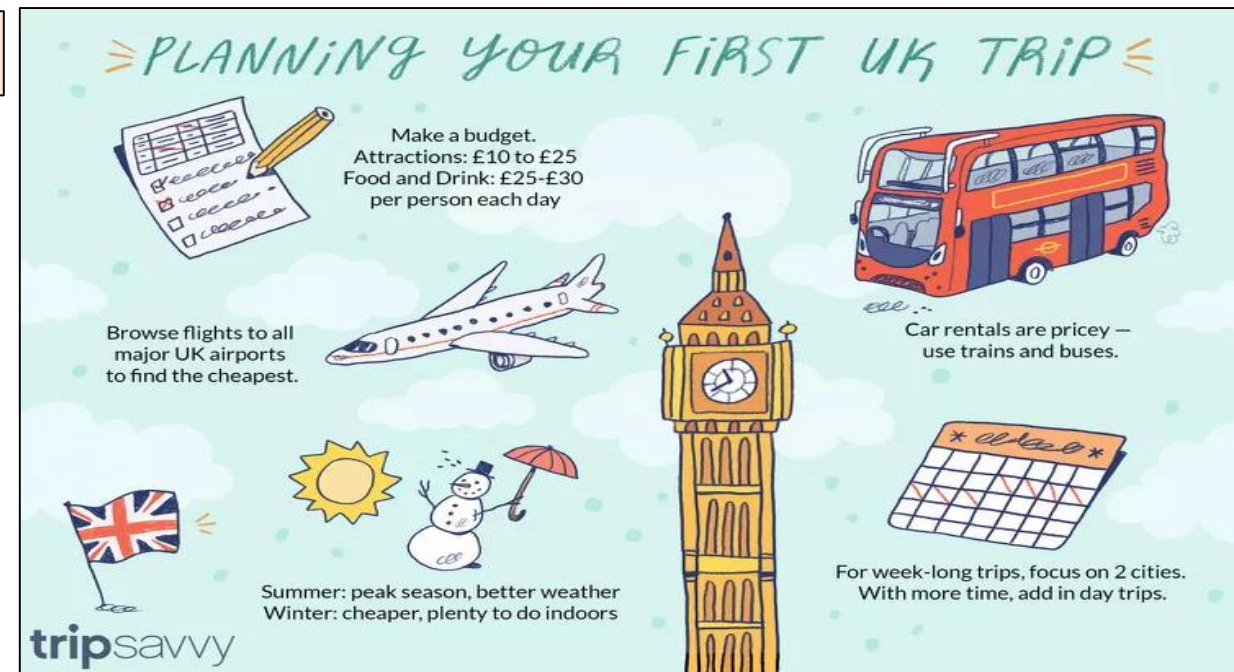
Find and cost a holiday for a family of four to Cornwall for 1 week. You must include details on how to get there, pictures of the location and a list of possible activities. You must remember to include any additional costs for extra activities.

Option 2:

Create a fact sheet about the top ten attractions in Edinburgh. You must include pictures and their location within Edinburgh. In addition you must say why you believe these are top tourist attractions. Include pictures and any additional admission costs involved. Also include any public transport options, especially maps of the route.

Option 3:

Plan a visit to the following attractions in London: Buckingham Palace, Madame Tussauds, London Zoo, London Aquarium, Natural History Museum and Science Museum. Include a London Tube map with the stops highlighted for your visit. Remember to include any extra admission costs.



Success criteria:

To be successful your work needs to be presented neatly in your books either hand-written or digitally produced.

Include a itinerary of activities or places you are visiting and any costs involved.

Include descriptions and pictures of the places you plan to visit and describe why they would be a good place to visit.

Include a map of the location and the areas you are visiting clearly identified on the map.